

Offers valid until June. 30th 2025

26510-Z206-A



Z206-A Compact Bundle

- 6 x 50ml rotor



6,000 rpm / 4,427 xg

26510-Z206-BND: **\$2,600**

26510-Z216-MK



Z216-M Microcentrifuge Bundles

- 44 x 01.5/2.0 ml
- COMBI-rotor, 24 x 1.5/2.0ml and 4 x PCR
- Over 21,000 xg! (15,000 rpm)



44 x 1.5/2.0ml



24 x 1.5/2.0ml and 4-PCR strips

Ambient
26510-Z216-BND44: **\$3,500**
(44-place)

26510-Z216-CMB: **\$4,000**
(COMBI-rotor)

Refrigerated
26510-Z216-K-BND44: **\$6,200**
(44-place)

26510-Z216-K-CMB: **\$6,700**
(COMBI-rotor)

26510-Z287-A



Z287-A MicroBundle

- 2 x microplate and 18 x 1.5/2.0ml



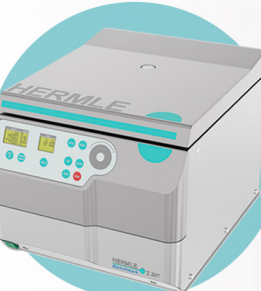
3,800 rpm / 3,717 xg



14,000 rpm / 15,994 xg

26510-Z287-BND-MB: **\$4,800**

26510-Z307



Z307 Deepwell Plate Bundle

- 2 x Deepwell Plate rotor



4,500 rpm / 2,716 xg

26510-Z307-BND-MP: **\$5,500**

26510-Z327-K



Z327 Series Bundles

- Tissue culture or blood tube options
- up to 8 x 50ml and 16 x 15ml
- up to 28 x 8-10ml and 32 x 1.8-7ml



Tissue Culture Pkg.



Blood Tube Pkg.

5,000 rpm / 4,136 xg

Ambient
26510-Z327-BND: **\$8,200**
(Tissue Culture)

26510-Z327-BND-BD: **\$8,200**
(Blood tube)

Refrigerated
26510-Z327-K-BND: **\$11,000**
(Tissue Culture)

26510-Z327-K-BND-BD: **\$11,000**
(Blood tube)

Offers valid until June. 30th 2025

26510-Z366-K



Z366 Series Bundles

- Ambient or Refrigerated
- up to 16 x 50ml and 40 x 15ml



4,500 rpm / 3,735 xg

Ambient
26510-Z366-BND: **\$9,000**

Refrigerated
26510-Z366-K-BND: **\$11,500**

26510-Z446-K

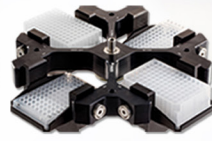


Z446 Series Bundles

- Tissue culture or Microplate options
- up to 28 x 50ml and 66 x 15ml
- up to 20 std. plates and 4 x Deepwell



Tissue Culture Pkg.



Microplate Pkg.

Ambient:
4,000 rpm / 3,434 xg

Refrigerated:
4,500 rpm / 4,346 xg

Ambient
26510-Z446-BND: **\$10,700**

(Tissue Culture)
26510-Z446-MPBND: **\$10,700**

Refrigerated
26510-Z446-K-BND: **\$14,000**

(Tissue Culture)
26510-Z446-K-MPBND: **\$14,000**

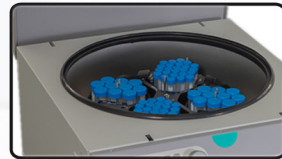


26510-Z496-K



Z496-K Floor Standing Bundle

- Swing out rotor: up to 40 x 50ml and 96 x 15ml
- Refrigerated



4,200 rpm / 3,964 xg

Only available in 230V

26510-Z496-K-BND: **\$26,000**

26510-Z36-HK



Z36-HK Super Speed Bundles

- Max speed up to 65,395 xg
- 3 rotor options available
- Refrigerated



6 x 250ml rotor
10,000 rpm / 15,650 xg



6 x 50ml rotor
21,000 rpm / 41,410 xg



12 x 1.5/2.0 ml rotor
30,000 rpm / 65,395 xg

26510-Z36-BND250: **\$16,000**

(6 x 250 ml)
26510-Z36-BND50: **\$15,000**

(6 x 50 ml)
26510-Z36-BND20: **\$14,000**

(12 x 1.5/2.0 ml)

26510-Z600-S3



SIEVA III Filtration Bundle

- Includes perforated basket *filters sold separately
- One-of-a-kind benchtop filtration centrifuge
- Option with temp. equalization port



Perforated rotor
10,000 rpm / 7,825 xg

*Available filter pore sizes: 7µ, 20µ, 30µ, 50µ

26510-Z600-S3-BND: **\$20,000**

(w/ temp. equalization) **\$21,000**