

# Super Speed Refrigerated Centrifuge

■ Z36-HK



**HERMLE**  
**Benchmark** 

6 x 250 ml

# Z 36 HK



The Z36 HK is the result of many years of experience in the design of universal centrifuges, high speed centrifuges and compact microcentrifuges. The result is a "Super-Speed" centrifuge with unmatched performance amongst benchtop centrifuges. A robust motor drive powers a variety of high speed angled rotors to speeds that would generally only be achievable in large, floor-standing ultra centrifuges. 2.0ml microtube samples can reach forces above 65,000 xg, while 50ml samples can reach as high as 41,410 xg. In addition to its high speed capabilities, the Z36 HK doubles as a universal centrifuge with a 4 x 250ml swing out rotor (offering inserts for all common tube sizes) as well as a 2 x 3 position swing-out microplate rotor.

## Technical data

Max. speed:	30,000 rpm
Max. RCF:	65,395 xg
Max. volume:	6 x 250 ml
Speed range:	200 - 30,000 rpm
Running time:	59 min 50 s / 10 s increments 99 h 59 min / 1 min increments
Dimensions:	28 in x 16.5 in x 20 in (w x h x d) 71.5 cm x 42 cm x 51 cm (wxhxd)
Weight:	200 lbs / 91 kg
Order No.:	Z036-HK 120 V / 50 - 60 Hz / 1600 W Z036-HK-E 230 V / 50-60 Hz / 1800 W



## Specifications

- Maintenance-free induction drive
- Microprocessor with large LCD display
- Motor driven lid lock
- Automatic radio-frequency rotor identification system (RFID) with over speed protection, immediately upon rotor insertion
- Active imbalance-identification and -cut off (rotor specific)
- CFC-free refrigeration system
- A large variety of rotors and accessories
- Audible signal at the end of each run with several melody options
- Noise level under 65 dBA at max. speed
- Manufactured according to international safety regulations, i.e. IEC 61010
- Imbalance tolerant drive pin
- Standstill cooling
- Stainless steel chamber

## Distinct Control Panel

- Simple one handed operation
- Easy to program with gloves on
- Splash proof digital display
- Permanent indication of Preset and Actual Values
- Selection of speed in both rpm and g-force, with increments of 10
- 10 acceleration and 10 deceleration rates with storage of up to 99 runs
- Preselection of the temperature from - 20°C to 40°C with 1°C increments
- Temperature selection available in both °C or °F
- Pre-cooling program option
- Standstill cooling
- Pre-selection of running time from 10 s to 99 h 59 min or continuous
- Storage of up to 99 runs incl. rotor type
- Quick-key for short runs
- Diagnostic program
- Timer: the centrifuge starts at the preselected time

# Accessories Z 36 HK

## Rotor/Bucket

Order No.:

Z366-250

Swing out rotor  
4 place  
Angle: 0-90°



## Adapter

Acceleration in s: 17/151  
Deceleration in s: 21/420  
Max. speed: 4,000 rpm  
Max. RCF: 2,987 xg  
Max. radius: 16.7 cm  
Temp. at max. speed: -18°C

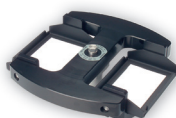
Z366-250-LID  
PC-Screw cap



Volume	250 ml	100 ml	50 ml	50 ml	15 ml	1.8-7 ml	6-10 ml	1.5-2.0 ml
Tubes Ø in mm	62	41	29	29 conical	17 conical	13 Vacutainer®	16 Vacutainer®	11
Length min./max. (mm)	110/130	95/120	95/120	116	120	75/100	75/100	40
Tubes per rotor	4	4	12	12	28	40	32	36
Radius Correction (cm)	0.7	0.5	0.1	0.0	0.0	0.5	0.1	0.8
Order No. Z366-250_	-A250	-A100	-A50R	-A50	-A15	-A57	-A10	-A20* *only possible with adapter -A250

Order No.:

Z326-02MP



Swing out rotor 2 x 3 Microplates  
Angle: 0-90°

Acceleration in s: 19/172  
Deceleration in s: 23/583  
Max. speed: 4,500 rpm  
Max. RCF: 2,716 xg  
Max. radius: 12 cm  
Max. loading height: 63 mm  
Max. loading weight: 310 g  
Temp. at max. speed: -13°C

Order No.:  
BT1500-A1520  
BT1500-A05  
Z326-MPCA

Tube rack  
20 x 1.5 ml (2.0 ml) Tubes  
20 x 0.5 ml Tubes  
3 x Chamber slide or 35/60 mm petri dish

Order No.:

Z366-06250



Angle rotor 6 x 250 ml  
Angle: 28°

Acceleration in s: 148/695  
Deceleration in s: 131/2,225  
Max. speed: 10,000 rpm  
Max. RCF: 15,650 xg  
Max. radius: 14.0 cm  
Max. Ø: 62 mm  
Temp. at max. speed: 3°C

Order No.:  
without Adapter  
Z366-06250-A225C  
Z366-06250-A50  
Z366-06250-A50R  
Z366-06250-A30  
Z366-06250-A15

Tube rack	Ø (mm)	Length (min./max.)
1 x 250 ml	62	122
1 x 175/225 ml conical**	61	118/137
1 x 50 ml conical	29	118
1 x 50 ml	29	103
2 x 30 ml	26	92
4 x 15 ml conical	17	120

\*\* Bottles available for order



Volume  
Part No.: 175 / 225 ml  
C0175 / C0225

Order No.:

Z326-0685



Angle rotor 6 x 85 ml  
Angle: 38°

Acceleration in s: 74/544  
Deceleration in s: 71/1,477  
Max. speed: 13,000 rpm  
Max. RCF: 21,726 xg  
Max. radius: 11.5 cm  
Max. Ø: 38 mm  
Temp. at max. speed: 0°C

Order No.:  
without Adapter  
Z326-85-A50R  
Z326-85-A50  
Z326-85-A30  
Z326-85-A15R  
Z326-85-A15

Tube rack	Ø (mm)	Length (min./max.):
1 x 85 ml	38	113
1 x 50 ml	29	105
1 x 50 ml conical	29	116
1 x 30 ml	25	90/103
1 x 15 ml	17	103/110
1 x 15 ml conical	17	120

Order No.:

Z326-0485



Angle rotor 4 x 85 ml  
Angle: 30°

Acceleration in s: 123/511  
Deceleration in s: 84/1,334  
Max. speed: 20,000 rpm  
Max. RCF: 41,137 xg  
Max. radius: 9.2 cm  
Max. Ø: 38 mm  
Temp. at max. speed: 17°C

Order No.:  
without Adapter  
Z326-85-A50R  
Z326-85-A50  
Z326-85-A30  
Z326-85-A15R  
Z326-85-A15

Tube rack	Ø (mm)	Length (min./max.):
1 x 85 ml	38	113
1 x 50 ml	29	105
1 x 50 ml conical	29	116
1 x 30 ml	25	90/103
1 x 15 ml	17	103/110
1 x 15 ml conical	17	120

Order No.:

Z326-1050



Angle rotor 10 x 50 ml conical  
Angle: 38°

Acceleration in s: 86/740  
Deceleration in s: 107/1,801  
Max. speed: 10,500 rpm  
Max. RCF: 16,022 xg  
Max. radius: 13 cm  
Max. Ø: 29 mm  
Temp. at max. speed: -4°C

Adapter	Ø (mm)	Length (min./max.):
Z326-50-B15HS 1 x 15 ml RB	17	97/123
Z326-15-A7* 1 x 7 ml	13.5	95/115
Z326-15-A5* 1 x 5 ml	13.5	70/90
Z326-50-A15 1 x 15 ml conical	17	120



# Accessories Z 36 HK

## Rotor/Bucket

Order No.:  
Z326-0650-HS



Angle rotor 6 x 50 ml (round)  
Angle: 26°

## Adapter

Acceleration in s: 87/755  
Deceleration in s: 73/937  
Max. speed: 21,000 rpm  
Max. RCF: 41,410 xg  
Max. radius: 8.4 cm  
Max. Ø: 29 mm  
Temp. at max. speed: 8°C

Order No.:	Tube rack	Ø (mm)	Length (min./max.):
without Adapter	1 x 50 ml	29	95/115
Z326-50-A30	1 x 30	25	92/95
Z326-50-B15R	1 x 15 ml	17	100/105
Z326-50-A15R	1 x 15 ml conical*	17	120

\*only without rotor lid

Order No.:  
Z326-3015



Angle rotor 30 x 15 ml glass  
or 20 x 15 ml conical  
Angle: 35°

Acceleration in s: 13/105  
Deceleration in s: 20/649  
Max. speed: 4,500 rpm  
Max. RCF: 2,830/2,467 xg  
Max. radius: 12.5/10.9 cm  
Max. Ø: 17 mm  
Temp. at max. speed: -18°C

Order No.:	Tube rack	Ø (mm)	Length (min./max.):
without	1 x 15 ml-Glass	17.0	95/115
C3100-ADP	1 x 5/7 ml (pack of 8)	13	75/100

Order No.:  
Z326-2010



Angle rotor 20 x 10 ml  
Angle: 30°

Acceleration in s: 60/482  
Deceleration in s: 55/1,021  
Max. speed: 16,000 rpm  
Max. RCF: 28,045 xg  
Max. radius: 9.8 cm  
Max. Ø: 16 mm  
Temp. at max. speed: 2°C

Order No.:	Tube rack	Ø (mm)	Length (min./max.):
without Adapter	1 x 10 ml	16	80

Order No.:  
Z326-3020H



Angle rotor 30 x 1.5 / 2.0 ml  
Angle: 45°

Acceleration in s: 70/674  
Deceleration in s: 78/531  
Max. speed: 20,000 rpm  
Max. RCF: 42,032 xg  
Max. radius: 9.4 cm  
Max. Ø: 11 mm  
Temp. at max. speed: 9°C

Order No.:	Tube rack	Ø (mm)	Length (min./max.):
without	1 x 2,0 ml	11	40
without	1 x 1,5 ml	11	40
C1008-A5-6	1 x 0.5 ml	8	45
C1008-A2-6	1 x 0.4/0.2 ml PCR	6	45

Order No.:  
Z326-1220H

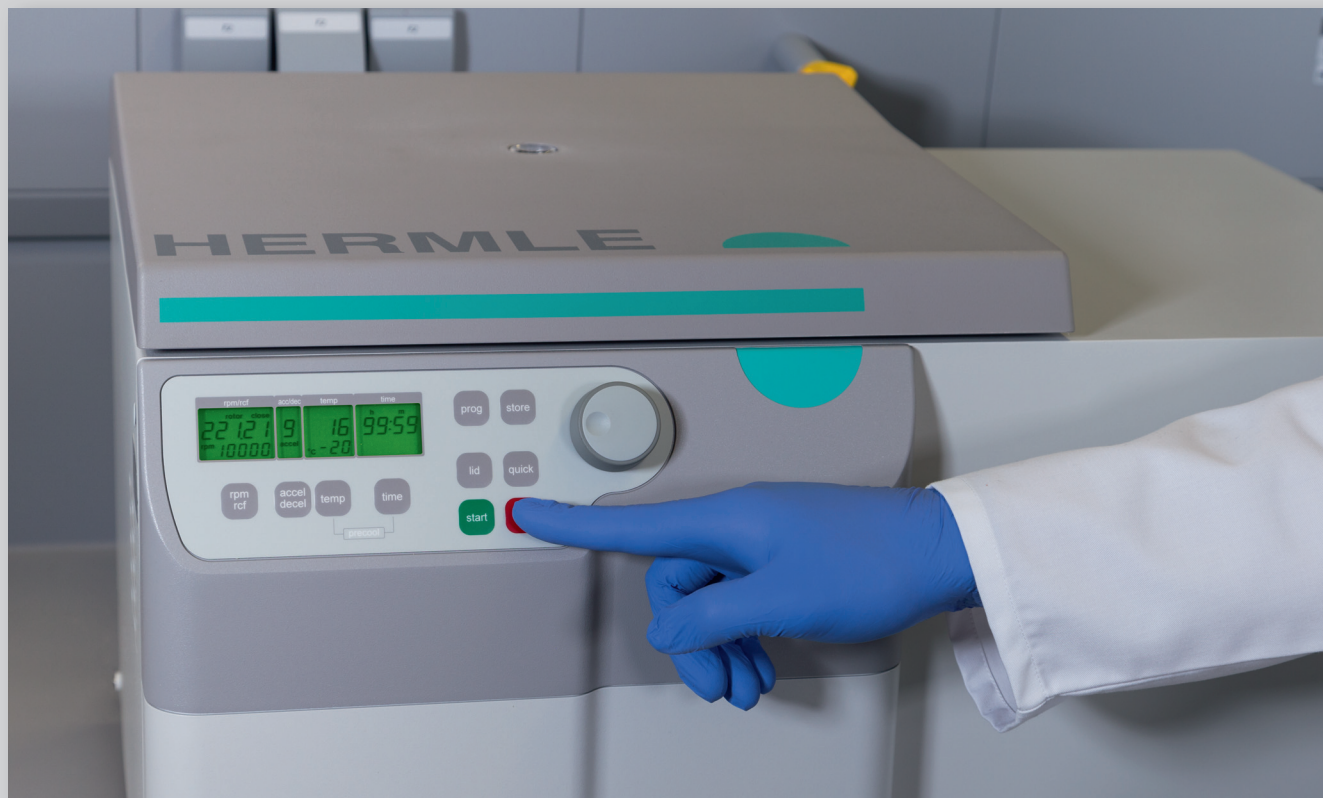


Angle rotor 12 x 1.5 / 2.0 ml  
Angle: 40°

Acceleration in s: 45/434  
Deceleration in s: 69/420  
Max. speed: 30,000 rpm  
Max. RCF: 65,395 xg  
Max. radius: 6.5 cm  
Max. Ø: 11 mm  
Temp. at max. speed: 6°C

Order No.:	Tube rack
Z36-04-HS	0.4 ml Tubes (Ø 6 x 50 mm) Adapter Kit (6 Pieces)
Z36-05-HS	0.5 ml Tubes (Ø 8 x 32 mm) Adapter Kit (6 Pieces)
Z36-20-HS	1.5 ml Adapter for full performance (necessary from 16,000 xg on) (6 Pieces)

## ■ The Perfect Fit



### Easy Handling:

- The ergonomic control panel is very user-friendly
- No need to remove gloves during operation
- Strictly a HERMLE application, you can store up to 99 different programs.
- Quick spin button..
- End of run alarm (this function can be deactivated).

### Safety:

- Automatic imbalance shut off system
- Overspeed protection for each rotor type
- Only operates when the centrifuge lid is locked
- Error code system to quickly detect issues
- Stable and firm design, made of steel, ensures excellent mechanical reliability and protection
- The Z36-HK is equipped with a sturdy, motorized lid lock.

### Efficient and Versatile:

- Due to the wide range of adapter and rotor options, the Z 36 HK can hold all common tubes and bottles, up to 250 ml.
- "Pre-cooling" function specific to each rotor for maximum efficiency
- The powerful motor accelerates in a very short time up to 30,000 rpm, which generates an rcf-value of over 65,000 xg!
- Easy rotor exchange. Switch between swing out, fixed angle, and microplate rotors with ease

More from **HERMLE**  
**Benchmark**



Universal Centrifuge Z216 -M  
Max. speed 15,000 rpm  
Max. volume 44 x 1.5 / 2.0 ml



Universal Centrifuge Z216-MK  
Max. speed 15,000 rpm  
Max. volume 44 x 1.5 / 2.0 ml

■ For more Information, please visit our website!

[www.HermleUSA.com](http://www.HermleUSA.com)  
PH: 908-769-5555  
EM: [info@benchmarkscientific.com](mailto:info@benchmarkscientific.com)

